

# INSTALLATION INSTRUCTIONS



## 2015-24 Ford F150 Rear Shock Relocation PART NUMBER 6564

### Technical Support

We strive to provide the utmost pre- and post-sales support for our products. Whether you just need upgrade advice, or assistance in adjusting or installing a product, our experienced support staff is always ready to help optimize your UMI product.

### CHAT WITH A UMI PROFESSIONAL TODAY

Need installation advice or clarification on the instructions? Scan the QR code (right) to chat directly with a UMI Professional or use the contact information provided to talk to customer service.

*Note: UMI social media accounts do not respond to customer service questions.*



### CONTACT CUSTOMER SERVICE

**Hours:** M-F 8:00-4:30 (EST)  
**Email:** [support@umiperformance.com](mailto:support@umiperformance.com)  
**Call:** +1 (814) 343-6315  
**Address:** 509 Hemlock Street  
Philipsburg, PA 16866

### SOCIAL MEDIA

#umiequipped #umiperformance  
@umiperformanceinc

### Parts Detailed In Instructions

Part Description	Quantity	PN
F 150 Relocation Brackets Hardware kit	1 set 1	6564 6564 BK

### Tools Needed



JACK



JACK STAND



SOCKET



RATCHET



WRENCH

## INSTALLATION INSTRUCTION

### DISCLAIMER

UMI Performance shall not be held liable for any injuries or damages resulting from the improper installation of this product. It is the sole responsibility of the user to ensure that the product is installed correctly and in accordance with all applicable laws, codes, and regulations. The user assumes all risk and liability for any injuries or damages that may arise from the improper installation of this product. It is important to follow these steps carefully and use the proper tools to avoid damaging the vehicle or causing injury to yourself. If you are uncertain about any part of the installation process, it is recommended that you seek the assistance of a professional mechanic.

### Installation Note:

This Shock Relocation Bracket will only work with **UMI Performance Flip Kit**.

### STEP 1: Prepare

Organize and layout all necessary parts and hardware prior to beginning the installation process. Carefully review the components and tools required to ensure that all necessary items are present (Fig 1). Once confirmed, proceed to disassembly.

### STEP 2: Lifting and Supporting Vehicle

Park the Truck on a flat level surface and place the transmission in park. Activate the parking brake and chock the Front wheels. Break the lugnuts loose on the rear tires to prepare for the wheel being removed.

**IMPORTANT:** Do not remove lug nuts, just break them loose.

### STEP 3: Disassembly

A) Using a properly rated jack, lift the rear of the truck using the factory jack points and install jack stands.

B) Remove Rear tires.

C) Start by loosening the lower shock bolt but do not remove (Fig 2).

D) Place a jack under the axle tube and apply pressure until the shock is in a centered location, and the bolt can be removed easily. Remove only the lower shock bolt. In some cases you may need to loosen but not remove the upper shock bolt so the shock will swing easy (Fig 3, 3A).

### Step 4: Installation

A) Shock relocation mounts are side specific. Use 6564PA and 6564DR on the correct side of the truck (Fig 4).

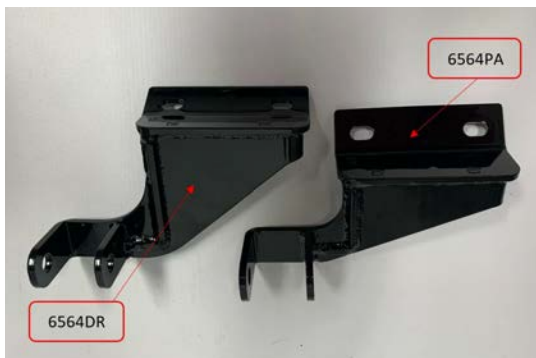


Figure 4: Mount Comparison

## FIGURES FOR REFERENCE



Figure 1: Kit Contents



Figure 2: Loosen shock Bolt.



Figure 3: Shock Bolt removed



Figure 3A: Upper Shock Bolt Loose

## INSTALLATION INSTRUCTION

A) Attach the lower relocation bracket to the UMI Ubolt clamp plate 6563S. The bracket should be installed on the bottom side of the plate using the supplied hardware. 6564DR installs to the rear of the axle, 6564PA to the front. **Do Not Tighten at this time.** (Fig 5)

B) With the bracket installed loosely, Re-attach and tighten the Shock. This allows the shock to fall in its desired position and not want to bind (Fig 6).

C) Tighten the 2 remaining bolts on the bottom of the relocation bracket. Be sure not to force the mount side to side. Tighten bolts where the shock has the mount positioned (Fig 7).

D) Repeat the process on the opposite side.

E) Torque shock thru bolts to 90 ft-lbs and the  $\frac{3}{8}$ -16 bolts securing the relocation brackets to 40 ft-lbs (Fig 8).

F) Reinstall wheels, Torque wheels and set the truck on the ground.

G) Enjoy!

## FIGURES FOR REFERENCE



Figure 5: loosely installed bracket.



Figure 6: Tighten Shock

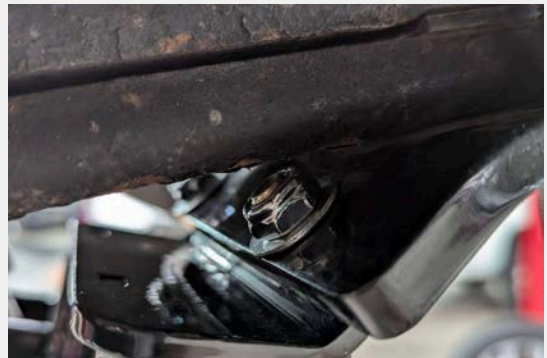


Figure 7: Relocation Brackets tight



Figure 8: Installed Shock