

INSTALLATION INSTRUCTIONS



1978-1988 GM G-Body G-Body Crossmember

PART NUMBER (PN): 3108

Technical Support

We strive to provide the utmost pre- and post-sales support for our products. Whether you just need upgrade advice, or assistance in adjusting or installing a product, our experienced support staff is always ready to help optimize your UMI product.

CHAT WITH A UMI PROFESSIONAL TODAY

Need installation advice or clarification on the instructions? Scan the QR code (right) to chat directly with a UMI Professional or use the contact information provided to talk to customer service.

Note: UMI social media accounts do not respond to customer service questions.



CONTACT CUSTOMER SERVICE

Hours: M-F 8:00-4:30 (EST)

Email: support@umiperformance.com

Call: +1 (814) 343-6315

Address: 509 Hemlock Street
Philipsburg, PA 16866

SOCIAL MEDIA

#umiequipped #umiperformance

@umiperformanceinc

Included Parts

Part Number	Quantity	PN
3108		
Crossmember	1	3108-MA
Pass Frame Rail Mount	1	3108G
Driver Frame Rail Mount	1	3108H
Frame Rail Spacer	1	3108J
Adjustment Block	1	3108W
Frame Rail Clamp Plate	1	3108L
Hardware Kit	1	3108-BK

Tools Needed



JACK



JACK STAND



SOCKET



RATCHET



WRENCH



DRILL



DRILL BIT



PRY BAR



ALLEN KEY

INSTALLATION INSTRUCTION

DISCLAIMER

UMI Performance shall not be held liable for any injuries or damages resulting from the improper installation of this product. It is the sole responsibility of the user to ensure that the product is installed correctly and in accordance with all applicable laws, codes, and regulations. The user assumes all risk and liability for any injuries or damages that may arise from the improper installation of this product. It is important to follow these steps carefully and use the proper tools to avoid damaging the vehicle or causing injury to yourself. If you are uncertain about any part of the installation process, it is recommended that you seek the assistance of a professional mechanic.

STEP 1 : Job Prep

A) Organize and layout all necessary parts and hardware prior to beginning the installation process. Carefully review the components and tools required to ensure that all necessary items are present. Once confirmed, proceed to disassembly

STEP 2: Lifting The Vehicle.

A) Using the properly rated jack and Jack stands, lift the vehicle using the factory lift pads on the frame. A good set of drive on ramps will work just as well.

STEP 3: Disassembly.

A) Start by removing the exhaust system. Whether it be Factory or aftermarket, it will be in the way. (Fig 2.)

B) Support the rear of the transmission that is currently in the car and remove the transmission crossmember bushing bolt's. (Fig 3)

C) Unbolt the existing crossmember from the frame on the passenger and driver side of the car.

D) Remove the Transmission Mount And replace with Desired UMI PN. We sell two versions of transmission mounts for this crossmember. A tall version and a short version.

STEP 3: Re-Assembly

Note: We have found it helps if you leave the bolts loose until everything is installed. Then follow the tightening order below.

A) Using the New Supplied Hardware, Bolt in the **SHORTER** Frame Rail Mount to the passenger side (Fig 3A).

B) Mount the driver side **Longer** Frame rail Mount to the frame. (Fig 3B)



Figure 3 B

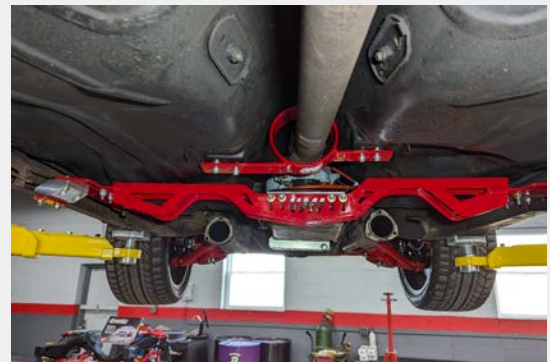


Figure 1: Fully Installed Crossmember



Figure 2: Remove Exhaust



Figure 3: Support trans.



Figure 3 A

FIGURES FOR REFERENCE

IMPORTANT:

Depending on your frame you may need the Aluminum Frame Rail Spacer and Frame Rail Clamp Plate (Fig 4). This is designed for the earlier G Body frames that do not have the factory extension. This step requires the drilling of two $\frac{3}{8}$ " holes to mount to the frame.

C) Bolt 3108J to 3108H and then mark the holes to be drilled. Drill holes with a $\frac{3}{8}$ " drill bit. After holes are drilled, bolt in 3108J.

D) Install your new transmission mount to your Transmission.

E) Slide the Adjustment Block P/N 3108W into the new crossmember center. **Important:** Be sure to put the Beveled edges down. (Fig 5)

F) Depending on Desired pinion angle this block is fully adjustable with the 5 hole mounting points.

G) Slide the UMI Crossmember in Place With the raised exhaust cutout on the passenger side. (Fig 6.)

H) Using the supplied Carriage Bolts, feed them down through the Frame Mount Plates so that the transmission mount is centered in the crossmember. Loosely install Trans mount bolt at this time.

I) Now that everything is installed tighten to spec in this order

- Frame Mounting Plates
- Adjustment block to desired height
- Crossmember to the Frame Mounts
- Transmission Mount Bolt

J) With Your New UMI Crossmember installed and tight, you can proceed to checking the driveline angle to make sure the transmission is at the proper mounting hole.

K) After the driveline angle is confirmed to be ok, proceed to reinstalling the exhaust.



Figure 4: 3108J Installed



Figure 5: Adjustment Block Installed



Figure 6: Fully Installed Crossmember